

TASMANIAN STATISTICAL INDICATORS

EMBARGO: 11:30AM (CANBERRA TIME) TUES 11 MAY 2004

C O N T E N T S

	<i>page</i>
Notes	2
Main features	3
List of tables.	7

SUBJECT AREAS

1 Population and demography	8
2 Labour force	9
3 Wages and prices	17
4 Production	23
5 Primary industry	24
6 Building	27
7 Finance	29
8 Tourism	30
9 Transport	33
10 Retail trade.	34
11 Overseas trade	35
12 Australia and state comparisons	38
13 Tasmanian statistical divisions comparisons	40

ADDITIONAL INFORMATION

Map: Tasmanian statistical divisions	41
--	----

I N Q U I R I E S

- For further information about these and related statistics, contact the National Information and Referral Service on 1300 135 070 or Mary Eagle on Hobart (03) 6222 5812.

NOTES

FORTHCOMING ISSUES

ISSUE

RELEASE DATE

June 2004

10 June 2004

INTRODUCTION

1 The June edition of Tasmanian Statistical Indicators (TSI) will be the final hard copy issue. A future Tasmanian Theme Page enhancement will provide links to Tasmanian economic indicators. For further information, please contact Adam Czapracki on (03) 6222 5839.

2 This publication contains latest figures for a comprehensive range of economic indicators. Statistics shown in this publication are the latest available at the date of preparation and may be subject to revision in subsequent issues. Reference should therefore always be made to the latest issue or to the statistical publication on the specific subject.

SEASONAL ADJUSTMENT AND TREND ESTIMATION

3 Seasonal adjustment is a means of removing the estimated effects of normal seasonal variation from the series so that the effects of other influences on the series can be more clearly recognised. Seasonal adjustment does not aim to remove the irregular or non-seasonal influences which may be present in any particular month. This means that month-to-month movements of the seasonally adjusted estimates may not be reliable indicators of *trend* behaviour.

4 The smoothing of seasonally adjusted series reduces the impact of the irregular components of the seasonally adjusted series and creates *trend* estimates. These *trend* estimates are derived by applying a 13-term Henderson-weighted moving average to all months except the last six. The last six monthly *trend* estimates are obtained by applying surrogates of the Henderson average to the seasonally adjusted series.

5 While this smoothing technique enables estimates to be produced for the latest month, it does result in revisions to the most recent months as additional observations become available. Generally, subsequent revisions become smaller and after 3 months have a negligible impact on the series.

6 A number of ABS data series will reflect significant and subsequent impacts of The New Tax System (TNTS), introduced in Australia from 1 July 2000. Further information can be found in *Information Paper: ABS Statistics and The New Tax System* (cat. no.1358.0).

SYMBOLS AND OTHER USAGES

\$m	million dollars
na	not available
np	not available for separate publication (but included in totals where applicable)
nya	not yet available
. .	not applicable
—	nil or rounded to zero
p	preliminary figure or series subject to revision
r	figure or series revised since previous issue
*	estimate has a relative standard error of between 25% and 50% and should be used with caution
**	estimate has a relative standard error greater than 50% and is considered too unreliable for general use.

Stevan R. Matheson
Regional Director, Tasmania

MAIN FEATURES

THE LABOUR FORCE

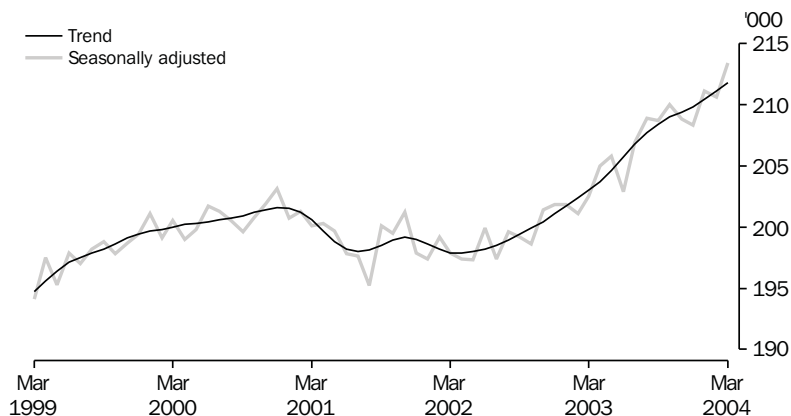
Trend estimates There were an estimated 227,300 persons (based on *trend* estimates) in the labour force in March 2004 and an estimated 384,000 civilian Tasmanians aged 15 years or more, yielding a labour force participation rate of 59.2%, compared to the March 2003 estimate of 58.9%. The Australian labour force participation rate for March 2004 was 63.6%, compared to the March 2003 estimate of 63.9% — see table 36 and *Labour Force, Australia* (cat. no. 6202.0).

For Tasmanian males, the *trend* estimate of the participation rate was 67.2% in March 2004, compared to the March 2003 estimate of 66.9%. For Tasmanian females, the *trend* estimate of the participation rate was 51.6% in March 2004, compared to 51.2% in March 2003 — see table 3.

EMPLOYMENT

Trend estimates The *trend* estimate of the total number of employed persons in Tasmania in March 2004 was 211,800, compared to 203,000 in March 2003, an increase of 4.3%. Employment over the same period increased in New South Wales by 1.2%, Victoria by 1.1%, Queensland by 2.8%, and Western Australia by 1.1%. Employment in South Australia decreased by -3.2%. The increase in the national employment figure over the same period was 1.5% — see table 36 and *Labour Force, Australia* (cat. no. 6202.0).

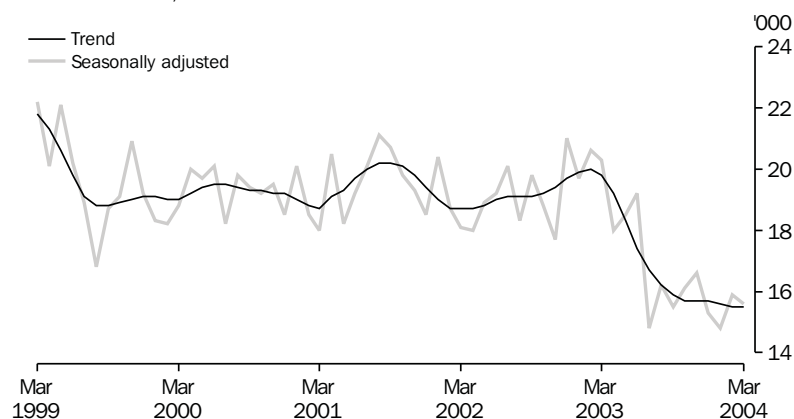
EMPLOYMENT, TASMANIA



UNEMPLOYMENT

Trend estimates The *trend* estimate of the number of unemployed persons in Tasmania for March 2004 was 15,500 compared to 19,800 in March 2003. The *trend* estimate of the unemployment rate for March 2004 was 6.8%, a decrease from the March 2003 figure of 8.9%. The Australian *trend* estimate of the unemployment rate was 5.7% in March 2004 compared to 6.2% in March 2003 — see tables 3 and 36, and *Labour Force, Australia* (cat. no. 6202.0).

UNEMPLOYMENT, TASMANIA



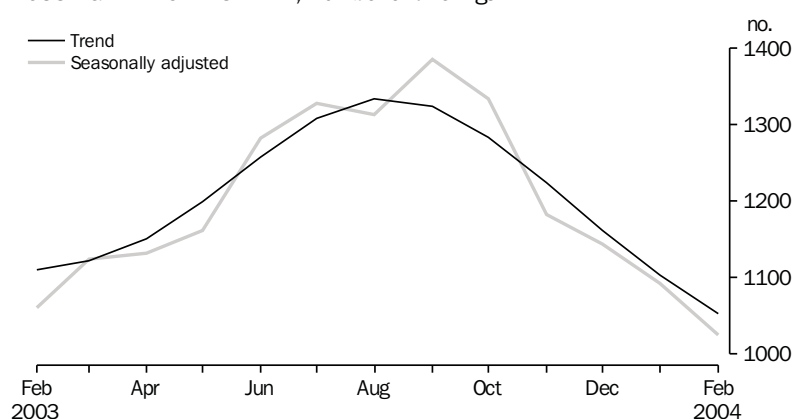
HOUSING FINANCE

Trend estimates

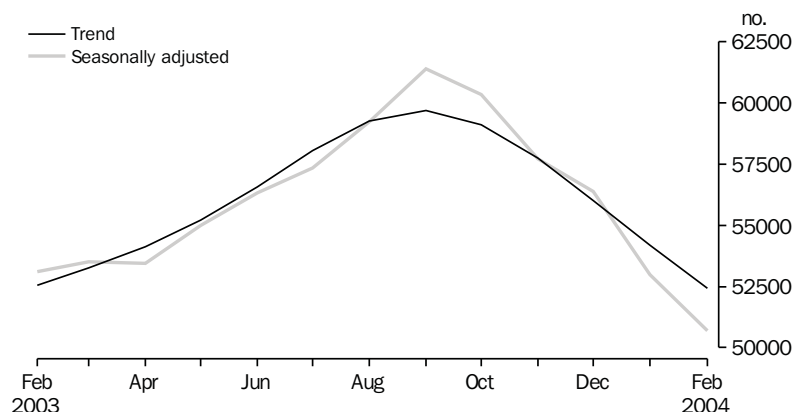
In *trend* terms, the number of housing finance commitments in Tasmania for February 2004 was 1,053 a decrease of 4.5% from the previous month. In the same period, the *trend* estimate for Australia decreased by 3.3%.

The Tasmanian *trend* estimate decreased by 5.1% between February 2003 and February 2004, while the national *trend* estimate decreased by 0.2%. The increases in the number of housing finance commitments over the same period for the other states and territories were South Australia (3.8%), Western Australia (9.2%) and Northern Territory (19.9%). The states and territories to record a decrease were Victoria (-3.7%), Queensland (-1.3%) and Australian Capital Territory (-23.3%). New South Wales did not change — see table 26 and *Housing Finance for Owner Occupation, Australia* (cat. no. 5609.0).

HOUSING FINANCE TASMANIA, Number of dwellings



HOUSING FINANCE AUSTRALIA, Number of dwellings



BUILDING APPROVALS

Original terms There were 201 dwelling units approved in Tasmania during February 2004, including 185 new houses. This compares with 198 dwelling units approved during January 2004, including 176 new houses. The number of dwelling units approved in February 2004 increased by 32.2% from the 152 approvals recorded in February 2003.

At current prices, the value of total building approved in Tasmania was \$47.8m in February 2004, which was 4.1% above the January 2004 figure of \$45.9m and 18.3% above the February 2003 figure of \$40.4m. Residential building contributed \$33.5m and non-residential building \$14.3m in February 2004 — see table 25 and *Building Approvals, Australia* (cat. no. 8731.0).

RETAIL

Trend estimates In *trend* terms, the estimate of retail turnover in Australia for February 2004 was \$15,809.2m, an 8.4% increase from the February 2003 estimate of \$14,588.0m. In *trend* terms, the estimate of retail turnover in Tasmania for February 2004 was \$335.7m, a 12.2% increase from the February 2003 estimate of \$299.3m — see table 32 and *Retail Trade, Australia* (cat. no. 8501.0).

SALES OF NEW MOTOR VEHICLES

Trend estimates In *trend* terms, there were 1,533 new motor vehicles sold in Tasmania in January 2004, compared to 1,580 sold in December 2003. The number of new motor vehicles sold in January 2004 increased by 20.1% from the January 2003 figure of 1,276. Passenger vehicles represented 58.8% of all new vehicles sold in Tasmania in January 2004. Nationally, the *trend* estimate of new motor vehicles sold in January 2004 was 76,437, an increase of 6.4% from the January 2003 figure of 71,871 — see table 31 and *Sales of New Motor Vehicles, Australia (Electronic Publication)* (cat. no. 9314.0).

CAPITAL EXPENDITURE

Original terms In original terms, the estimate of total capital expenditure at current prices for Australia in the December quarter 2003 was \$13,778m, an 8.0% increase from the September quarter estimate of \$12,755m. In original terms, the estimate of total capital expenditure at current prices for Tasmania in the December quarter 2003 was \$159m, a 0.6% decrease from the September quarter estimate of \$160m.

For Tasmania, the estimate for expenditure on buildings and structures increased by 17.6% from the September quarter to the December quarter 2003, and the estimate for expenditure on equipment, plant and machinery decreased by 2.8%. The estimates of expenditure by the mining industry increased from \$5m to \$9m, and expenditure by the manufacturing industry and other selected industries each decreased in the December quarter 2003 — see table 27 and *Private New Capital Expenditure and Expected Expenditure* (cat. no. 5625.0).

LIVESTOCK SLAUGHTERING

Trend estimates Movements of February 2004 *trend* estimates showed slight increases in two of the livestock slaughtering series from the previous month: cattle and calves rose by 1.9%, and pigs rose by 0.5%. The *trend* estimate for the number of sheep and lambs slaughtered fell by 2.4%.

The *trend* estimate for the number of cattle and calves slaughtered in February 2004 was 23,800, up by 6.7% on the estimate for February 2003 and up by 59.5% on the estimate for February 2002.

The *trend* estimate for the number of sheep and lambs slaughtered in February 2004 was 63,400, down by 1.5% on the estimate for February 2003 and up by 25.9% on the estimate for February 2002.

The *trend* estimate for the number of pigs slaughtered in February 2004 was 3,900, down by 3.4% on the estimate for February 2003 and down by 5.3% on the estimate for February 2002.

OVERSEAS TRADE

The value of Tasmania's exports for the month of February 2004 was \$152m, a decrease of 10% on the month of January 2004. Australia's exports for February 2004 totalled \$8,390m.

Tasmania's major export destinations for the month of February 2004 were Japan (\$43.9m), Hong Kong (\$24.1m) and United States of America (\$18.7m). Major commodity groups exported for the month were non-ferrous metals (\$39.5m), metallic ores and metal scrap (\$10.5m) and meat and meat preparations (\$9.9m).

CONSUMER PRICE INDEX

The Consumer Price Index (All groups) for Hobart increased by 0.6% in the December quarter of 2003. Sydney recorded the largest increase (0.8%) while Melbourne recorded the lowest (0.2%). The weighted average of the eight capital cities increased by 0.5%.

LIST OF TABLES

1	Population	8
2	Births and deaths	8
3	Labour force status	9
4	Labour force status by region, males	10
5	Labour force status by region, females	11
6	Labour force status by region, persons	12
7	Teenage labour market	13
8	All employed persons by occupation	14
9	Employed persons by industry	15
10	Average hours worked	15
11	Job vacancies	16
12	Industrial disputes	16
13	Average weekly earnings of employees	17
14	Indexes of total hourly rates of pay	18
15	Summary of annual movements in wages and prices	19
16	House price index numbers, Hobart	19
17	Consumer price index, Hobart and eight capital cities combined	20
18	Price index of materials used in building other than house building, Hobart	21
19	Production of selected commodities	23
20	Livestock slaughtering: original	24
21	Livestock slaughtering: seasonally adjusted and trend	24
22	Meat production	25
23	Principal mineral concentrates produced	25
24	Sawmills and plywood mills, logs delivered and timber produced	26
25	Building approvals: original	27
26	Secured housing commitments	28
27	Private new capital expenditure by type of asset: original	29
28	Accommodation establishments	30
29	National Parks, person entries	31
30	Tracks in National Parks, walker registrations	32
31	Sales of new motor vehicles	33
32	Turnover of retail establishments at current prices	34
33	Value of overseas trade — Tasmania and Australia	35
34	Merchandise exports by selected countries and country groups	36
35	Merchandise exports by selected commodity groups: original	37
36	Major Statistical Indicators — Australia and state comparisons	38
37	Major Statistical Indicators — Tasmanian Statistical Divisions	40

1

POPULATION — ORIGINAL

	<i>Estimated resident population</i>	<i>Natural increase(a)</i>	<i>Net estimated migration gain</i>	<i>Total population growth</i>	<i>Annual growth rate(b)</i>
	'000	'000	'000	'000	%
2000–01	471.8	2.0	–2.0	0.4	0.08
2001–02	472.6	2.0	–1.2	0.8	0.17
2002–03	477.1	1.9	2.6	4.5	0.95
2001					
September qtr	471.8	0.4	–0.4	—	0.10
December qtr	472.2	0.5	–0.1	0.4	0.16
2002					
March qtr	472.6	0.6	–0.2	0.4	0.16
June qtr p	472.6	0.5	–0.5	—	0.17
September qtr p	473.2	0.6	—	0.6	0.31
December qtr p	474.3	0.3	0.8	1.1	0.45
2003					
March qtr p	475.9	0.6	1.1	1.6	0.71
June qtr p	477.1	0.5	0.7	1.1	0.95
September qtr p	478.4	0.4	1.0	1.3	1.11

(a) Excess of live births registered over deaths registered (based on usual state of residence).

(b) Percentage growth from same quarter in previous year.

Source: Australian Demographic Statistics (cat. no. 3101.0).

2

BIRTHS AND DEATHS(a)(b)

	<i>Births</i>		<i>Deaths</i>		<i>Infant mortality(c)</i>	
	<i>no.</i>	<i>rate(d)</i>	<i>no.</i>	<i>rate(e)</i>	<i>no.</i>	<i>rate(f)</i>
2000–01	5 874	1.88	3 827	7.6	43	7.3
2001–02	5 871	1.91	3 849	7.4	30	5.1
2002–03	5 809	1.91	3 877	7.3	28	4.8
2001						
September qtr	1 416	..	1 021	..	6	4.2
December qtr	1 507	..	964	..	4	2.7
2002						
March qtr	1 477	..	890	..	13	8.8
June qtr	1 471	..	974	..	7	4.8
September qtr	1 539	..	981	..	9	5.8
December qtr	1 440	..	1 108	..	7	4.9
2003						
March qtr	1 490	..	934	..	8	5.4
June qtr	1 340	..	854	..	4	3.0
September qtr	1 537	..	1 171	..	14	9.1

(a) Usual residents of Tasmania.

(b) Marriages data is no longer released on a quarterly basis.

(c) Deaths of children under one year of age.

(d) Total fertility rate. The sum of age specific fertility rates (live births at each age of a mother per female population of that age). It represents the number of children a woman would bear during her lifetime if she experienced age-specific fertility rates at each age of her reproductive life.

(e) Standardised death rate. The overall death rate, per 1,000 persons, that would have prevailed in a standard population if it had experienced at each age the death rates of the population being studied. The standard population used in these calculations is all persons in the 1991 Australian population.

(f) Rate per 1,000 live births.

Source: Australian Demographic Statistics (cat. no. 3101.0).

	Trend series(b)				Seasonally adjusted series(b)			
	Employed	Unemployed	Unemployment rate	Participation rate	Employed	Unemployed	Unemployment rate	Participation rate
	'000	'000	%	%	'000	'000	%	%
MALES								
2003								
March	111.5	12.0	9.7	66.9	111.2	12.1	9.8	66.8
April	111.8	11.6	9.4	66.8	112.7	10.9	8.8	66.9
May	112.3	11.0	8.9	66.7	112.7	10.7	8.7	66.8
June	112.9	10.4	8.5	66.6	111.6	12.2	9.8	66.8
July	113.2	10.1	8.2	66.5	113.9	8.1	6.6	65.8
August	113.5	9.9	8.0	66.5	113.9	10.1	8.2	66.8
September	113.6	9.8	7.9	66.4	113.5	9.6	7.8	66.2
October	113.8	9.7	7.9	66.4	114.2	10.2	8.2	66.8
November	114.1	9.6	7.8	66.4	113.7	10.4	8.4	66.6
December	114.6	9.5	7.7	66.5	113.6	8.7	7.1	65.6
2004								
January	115.2	9.4	7.5	66.7	115.3	9.1	7.3	66.6
February	116.0	9.2	7.4	66.9	116.2	9.3	7.4	67.1
March	116.7	9.2	7.3	67.2	117.7	9.5	7.4	67.9
FEMALES								
2003								
March	91.5	7.7	7.8	51.2	91.3	8.2	8.2	51.3
April	91.9	7.6	7.6	51.3	92.3	7.0	7.1	51.2
May	92.3	7.3	7.3	51.3	93.1	7.7	7.7	51.9
June	92.9	7.0	7.0	51.3	91.3	7.0	7.1	50.6
July	93.5	6.6	6.6	51.4	93.0	6.7	6.7	51.2
August	94.3	6.3	6.3	51.6	95.1	6.1	6.0	51.9
September	94.8	6.1	6.1	51.7	95.2	5.9	5.8	51.8
October	95.2	6.0	6.0	51.8	95.9	5.9	5.8	52.1
November	95.3	6.1	6.0	51.8	95.1	6.2	6.1	51.7
December	95.3	6.2	6.1	51.8	94.7	6.6	6.5	51.7
2004								
January	95.2	6.2	6.1	51.7	95.8	5.7	5.6	51.7
February	95.1	6.3	6.2	51.6	94.3	6.6	6.6	51.4
March	95.1	6.3	6.2	51.6	95.7	6.1	6.0	51.7
PERSONS								
2003								
March	203.0	19.8	8.9	58.9	202.5	20.3	9.1	58.9
April	203.7	19.2	8.6	58.8	205.0	18.0	8.1	58.9
May	204.6	18.3	8.2	58.8	205.8	18.5	8.2	59.1
June	205.7	17.4	7.8	58.8	202.9	19.2	8.6	58.5
July	206.8	16.7	7.5	58.8	206.9	14.8	6.7	58.3
August	207.7	16.2	7.2	58.8	208.9	16.2	7.2	59.2
September	208.4	15.9	7.1	58.9	208.7	15.5	6.9	58.8
October	209.0	15.7	7.0	58.9	210.0	16.1	7.1	59.3
November	209.4	15.7	7.0	58.9	208.8	16.6	7.4	59.0
December	209.8	15.7	7.0	59.0	208.3	15.3	6.9	58.5
2004								
January	210.4	15.6	6.9	59.0	211.1	14.8	6.6	59.0
February	211.1	15.5	6.8	59.1	210.6	15.9	7.0	59.1
March	211.8	15.5	6.8	59.2	213.4	15.6	6.8	59.6

(a) For explanation of terms and concepts, refer to *Labour Force, Australia* (cat. no. 6202.0).

(b) Seasonally adjusted and trend estimates are revised each month; see Notes on page 2. New seasonal factors based on the concurrent adjustment method have been incorporated.

Source: *Labour Force, Australia* (cat. no. 6202.0).

4

LABOUR FORCE STATUS BY REGION — MALES(a)(b)

	<i>Total employed</i>	<i>Total unemployed</i>	<i>Unemployment rate</i>	<i>Participation rate</i>
	'000	'000	%	%
HOBART AND SOUTHERN STATISTICAL DIVISIONS				
2002				
March	51.3	6.2	10.8	63.9
2003				
March	54.1	5.2	8.8	65.2
2004				
January	56.9	4.9	8.0	67.0
February	56.4	5.2	8.5	66.7
March	56.2	5.0	8.2	66.2
NORTHERN STATISTICAL DIVISION				
2002				
March	32.2	3.1	8.8	68.6
2003				
March	33.8	4.1	10.8	72.8
2004				
January	33.4	3.1	8.4	69.3
February	33.6	2.9	7.9	69.1
March	33.2	3.1	8.6	68.8
MERSEY-LYELL STATISTICAL DIVISION				
2002				
March	25.7	2.6	9.1	68.9
2003				
March	23.3	3.0	11.3	63.3
2004				
January	25.9	1.9	6.9	66.3
February	26.3	1.9	6.9	67.2
March	28.2	1.5	5.2	70.8
TASMANIA				
2002				
March	109.2	11.9	9.8	66.3
2003				
March	111.2	12.3	9.9	66.9
2004				
January	116.2	9.9	7.9	67.5
February	116.3	10.1	8.0	67.5
March	117.6	9.7	7.6	67.9

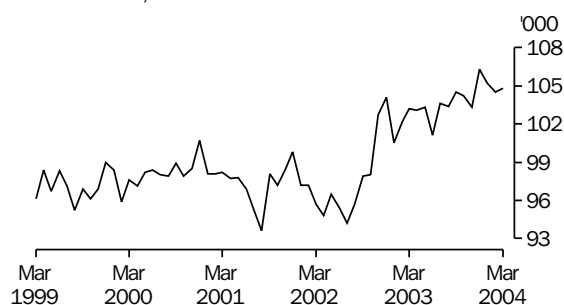
(a) For explanation of terms and concepts, refer to *Labour Force, Australia* (cat. no. 6202.0).

(b) Data in this table are original series, i.e. they are not part of a seasonally adjusted or a trend series. Accordingly, care should be exercised when using these data.

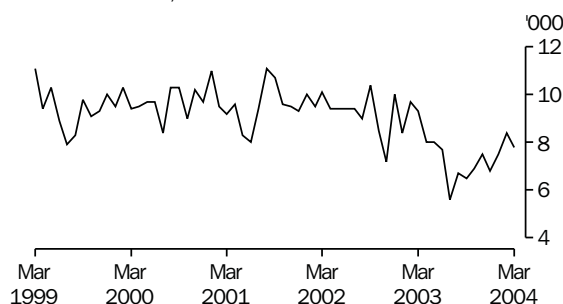
Source: *Labour Force, Australia, Detailed — Electronic Delivery, Monthly* (cat. no. 6291.0.55.001).

Hobart and Southern Statistical Divisions (see table 6)

EMPLOYMENT, Persons



UNEMPLOYMENT, Persons



5

LABOUR FORCE STATUS BY REGION — FEMALE(a)(b)

	<i>Total employed</i>	<i>Total unemployed</i>	<i>Unemployment rate</i>	<i>Participation rate</i>
	'000	'000	%	%
HOBART AND SOUTHERN STATISTICAL DIVISIONS				
2002				
March	44.5	3.9	8.0	50.8
2003				
March	49.1	4.0	7.6	55.3
2004				
January	48.2	2.6	5.1	52.2
February	48.0	3.2	6.2	52.5
March	48.5	2.8	5.4	52.6
NORTHERN STATISTICAL DIVISIONS				
2002				
March	25.8	1.8	6.4	50.9
2003				
March	25.6	2.6	9.3	51.7
2004				
January	27.7	1.9	6.5	53.5
February	26.1	2.6	9.0	51.8
March	27.5	2.3	7.7	53.8
MERSEY-LYELL STATISTICAL DIVISIONS				
2002				
March	18.7	*0.9	4.7	46.0
2003				
March	16.9	1.8	9.7	43.6
2004				
January	18.3	*1.1	5.8	44.7
February	19.0	2.0	9.4	48.1
March	20.0	1.2	5.7	48.7
TASMANIA				
2002				
March	89.0	6.6	6.9	49.8
2003				
March	91.7	8.5	8.5	51.7
2004				
January	94.3	5.7	5.7	50.9
February	93.1	7.7	7.7	51.4
March	96.0	6.3	6.2	52.0

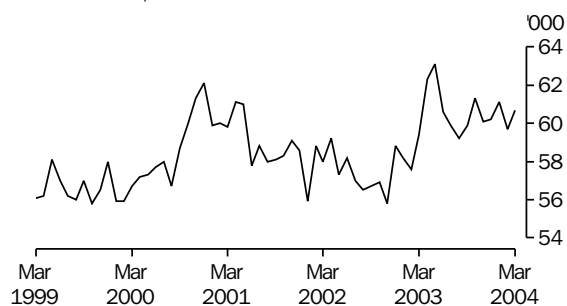
(a) For explanation of terms and concepts, refer to *Labour Force, Australia* (cat. no. 6202.0).

(b) Data in this table are original series, i.e. they are not part of a seasonally adjusted or a trend series. Accordingly, care should be exercised when using these data.

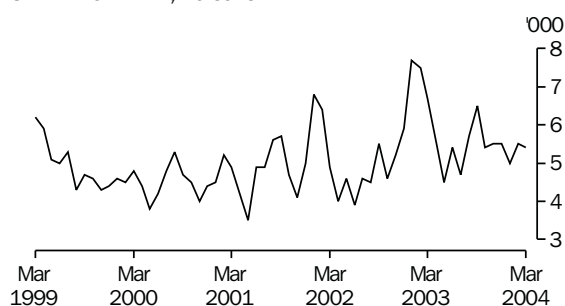
Source: *Labour Force, Australia, Detailed — Electronic Delivery, Monthly* (cat. no. 6291.0.55.001).

Northern Statistical Division (see table 6)

EMPLOYMENT, Persons



UNEMPLOYMENT, Persons



6

LABOUR FORCE STATUS BY REGION — PERSONS(a)(b)

	<i>Total employed</i>	<i>Total unemployed</i>	<i>Unemployment rate</i>	<i>Participation rate</i>
	'000	'000	%	%
HOBART AND SOUTHERN STATISTICAL DIVISIONS				
2002				
March	95.7	10.1	9.5	57.2
2003				
March	103.2	9.3	8.2	60.1
2004				
January	105.2	7.5	6.7	59.4
February	104.5	8.4	7.4	59.4
March	104.8	7.8	6.9	59.2
NORTHERN STATISTICAL DIVISION				
2002				
March	58.0	4.9	7.8	59.6
2003				
March	59.4	6.7	10.2	62.0
2004				
January	61.1	5.0	7.6	61.2
February	59.7	5.5	8.4	60.3
March	60.7	5.4	8.2	61.1
MERSEY-LYELL STATISTICAL DIVISION				
2002				
March	44.4	3.5	7.3	57.3
2003				
March	40.2	4.8	10.6	53.3
2004				
January	44.2	3.1	6.5	55.3
February	45.2	3.9	8.0	57.5
March	48.2	2.7	5.4	59.5
TASMANIA				
2002				
March	198.1	18.4	8.5	57.9
2003				
March	202.9	20.8	9.3	59.1
2004				
January	210.4	15.6	6.9	59.0
February	209.4	17.8	7.8	59.2
March	213.7	16.0	6.9	59.8

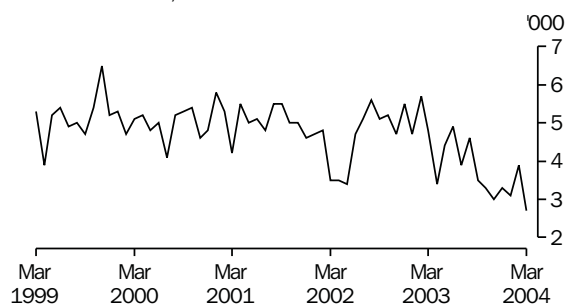
(a) For explanation of terms and concepts, refer to *Labour Force, Australia* (cat. no. 6202.0).

(b) Data in this table are original series, i.e. they are not part of a seasonally adjusted or a trend series. Accordingly, care should be exercised when using these data.

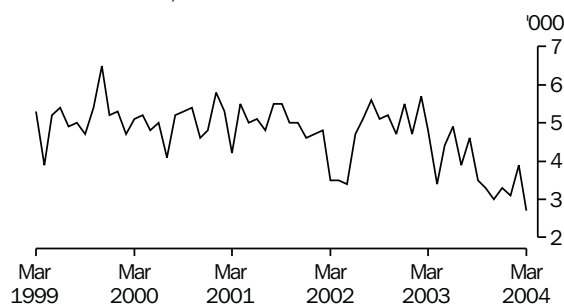
Source: *Labour Force, Australia, Detailed — Electronic Delivery, Monthly* (cat. no. 6291.0.55.001).

Mersey-Lyell Statistical Division (see table 6)

UNEMPLOYMENT, Persons



UNEMPLOYMENT, Persons



7

TEENAGE LABOUR MARKET(a)

	<i>Employed</i>		<i>Unemployed</i>		<i>Labour force</i>	<i>Not in labour force</i>	<i>Civilian population aged 15–19</i>	<i>Unemployment rate</i>	<i>Unemployment population ratio</i>	<i>Participation rate</i>
	<i>Full time</i>	<i>Total</i>	<i>Looking for full time work</i>	<i>Total</i>						
	'000	'000	'000	'000	'000	'000	'000	%	%	%
ATTENDING NEITHER A SCHOOL NOR A TERTIARY INSTITUTION FULL-TIME										
2002										
March	7.2	9.1	2.2	2.4	11.5	1.5	13.0	20.6	18.2	88.3
2003										
March	6.1	9.0	1.9	1.9	11.0	1.6	12.5	17.6	15.4	87.5
2004										
January	7.9	10.1	1.8	1.8	11.9	2.2	14.2	14.9	12.6	84.2
February	7.7	10.1	1.6	1.6	11.6	1.6	13.2	13.7	12.1	88.2
March	7.4	9.9	1.3	1.4	11.3	1.6	12.9	12.3	10.8	87.9
ATTENDING SCHOOL OR A TERTIARY INSTITUTION FULL-TIME										
2002										
March	**0.1	4.7	—	2.3	7.0	14.0	20.9	32.4	10.8	33.4
2003										
March	**0.1	7.7	*0.5	1.5	9.2	12.4	21.6	16.3	7.0	42.7
2004										
January	1.4	8.2	*0.6	1.4	9.6	10.5	20.2	15.0	7.2	47.8
February	**0.4	7.2	*0.6	*0.9	8.1	13.0	21.2	11.3	4.4	38.4
March	**0.2	6.9	*0.8	2.1	9.0	12.5	21.5	23.1	9.7	41.9
TOTAL										
2002										
March	7.3	13.8	2.2	4.6	18.5	15.5	33.9	25.1	13.6	54.4
2003										
March	6.2	16.8	2.5	3.4	20.2	13.9	34.1	17.0	10.1	59.2
2004										
January	9.4	18.3	2.4	3.2	21.6	12.8	34.3	14.9	9.4	62.8
February	8.1	17.3	2.1	2.5	19.8	14.6	34.4	12.7	7.3	57.5
March	7.6	16.9	2.1	3.5	20.3	14.1	34.4	17.1	10.1	59.1

(a) Persons aged 15–19 years. For explanation of terms and concepts, refer to *Labour Force, Australia* (cat. no. 6202.0). Care should be exercised when using these series as some estimates are subject to high sampling variability.

Source: *Labour Force, Australia, Detailed — Electronic Delivery, Monthly* (cat. no. 6291.0.55.001).

	February 2003			February 2004		Proportion of total employed	
	Persons '000	Males '000	Females '000	Persons '000		Feb 2003 %	Feb 2004 %
Managers and administrators							
Generalist managers	2.1	2.4	**0.2	2.5		*1.0	1.2
Specialist managers	4.6	4.3	2.0	6.4		2.3	3.1
Farmers and farm managers	7.2	4.7	*1.1	5.7		3.6	2.7
Total	13.9	11.6	3.3	14.9		6.9	7.1
Professionals							
Science, building and engineering professionals	3.4	2.4	*1.1	3.5		1.7	1.7
Business and information professionals	7.7	3.9	2.0	6.0		3.8	2.9
Health professionals	6.7	2.0	6.4	8.5		3.3	4.1
Education professionals	9.9	2.5	5.1	7.6		4.9	3.6
Social, arts and miscellaneous professionals	6.7	3.9	2.3	6.2		3.3	3.0
Total	34.3	14.9	16.9	31.8		17.1	15.2
Associate professionals							
Science, engineering and related associate professionals	2.5	3.4	*0.8	4.2		1.2	2.0
Business and administration associate professionals	6.7	2.1	3.4	5.5		3.3	2.6
Managing supervisors (sales and service)	9.8	6.8	4.6	11.4		4.9	5.4
Health and welfare associate professionals	*1.1	**0.4	1.2	1.6		*0.5	*0.8
Other associate professionals	2.9	2.5	*1.1	3.7		1.4	1.8
Total	23.0	15.3	11.1	26.3		11.5	12.6
Tradespersons and related workers							
Mechanical and fabrication engineering tradespersons	5.0	7.1	—	7.1		2.5	3.4
Automotive tradespersons	2.6	3.0	—	3.0		1.3	1.4
Electrical and electronics tradespersons	4.3	3.9	—	3.9		2.1	1.9
Construction tradespersons	6.1	6.1	**0.1	6.3		3.0	3.0
Food tradespersons	2.2	1.8	*0.7	2.4		*1.1	*1.1
Skilled agricultural and horticultural workers	2.0	2.4	**0.3	2.7		*1.0	1.3
Other tradespersons and related workers	3.7	2.4	1.5	3.9		1.8	1.9
Total	26.0	26.8	2.6	29.4		13.0	14.0
Advanced clerical and service workers							
Secretaries and personal assistants	3.6	—	2.9	2.9		1.8	1.4
Other advanced clerical and service workers	2.8	*0.5	1.8	2.3		1.4	*1.1
Total	6.4	*0.5	4.7	5.2		3.2	2.5
Intermediate clerical, sales and service workers							
Intermediate clerical workers	20.0	5.4	17.5	22.9		10.0	10.9
Intermediate sales and related workers	3.1	1.9	*0.5	2.4		1.5	*1.1
Intermediate service workers	11.2	3.1	12.4	15.5		5.6	7.4
Total	34.3	10.4	30.4	40.8		17.1	19.5
Intermediate production and transport workers							
Intermediate plant operators	4.9	5.8	**0.2	6.0		2.4	2.9
Intermediate machine operators	2.6	2.3	**0.2	2.5		1.3	1.2
Road and rail transport drivers	6.1	6.0	*0.6	6.6		3.0	3.2
Other intermediate production and transport workers	5.7	3.4	*1.0	4.4		2.8	2.1
Total	19.4	17.5	1.9	19.4		9.7	9.3
Elementary clerical, sales and service workers							
Elementary clerks	*1.1	*0.6	*1.0	1.6		*0.5	*0.8
Elementary sales workers	16.1	5.1	11.2	16.2		8.0	7.7
Elementary service workers	2.9	1.5	*0.8	2.3		1.4	*1.1
Total	20.1	7.1	13.0	20.1		10.0	9.6
Labourers and related workers							
Cleaners	6.5	2.3	4.3	6.6		3.2	3.2
Factory labourers	5.6	2.5	1.5	4.0		2.8	1.9
Other labourers and related workers	10.7	7.3	3.5	10.8		5.3	5.2
Total	22.7	12.2	9.3	21.5		11.3	10.3
Total employed	200.1	116.3	93.1	209.4		100.0	100.0

(a) For explanation of terms and concepts, refer to *Australian Labour Market Statistics* (cat. no. 6105.0).

(b) Classified according to the Australian Standard Classification of Occupations (ASCO), Second edition.

Source: *Labour Force, Australia, Detailed — Electronic Delivery, Quarterly* (cat. no. 6291.0.55.001).

9

EMPLOYED PERSONS BY INDUSTRY(a)(b)

	Number of Employees				
	February 2003	May 2003	August 2003	November 2003	February 2004
	'000	'000	'000	'000	'000
Agriculture, forestry and fishing	15.6	17.2	17.0	17.1	16.9
Mining	2.0	1.6	1.8	2.1	1.8
Manufacturing	22.1	22.8	20.8	21.3	24.3
Electricity, gas and water supply	1.8	1.7	2.3	2.3	2.4
Construction	12.2	12.4	13.1	12.0	12.0
Wholesale trade	9.8	9.0	8.3	7.6	8.5
Retail trade	32.4	35.1	34.3	34.5	32.8
Accommodation, cafes and restaurants	11.0	11.3	10.8	11.3	13.1
Transport and storage	8.0	8.0	8.4	10.4	8.9
Communication services	1.9	2.8	3.0	2.6	2.4
Finance and insurance	6.5	5.7	5.1	5.2	4.8
Property and business services	16.1	15.3	15.4	15.4	17.3
Government administration and defence	11.8	11.9	12.2	11.6	12.1
Education	15.1	17.0	16.6	17.1	13.4
Health and community services	20.8	22.1	23.6	23.4	24.8
Cultural and recreational services	5.4	4.6	4.5	5.0	4.7
Personal and other services	7.6	8.8	8.7	9.9	9.2
Total all industries	200.1	207.3	206.1	209.0	209.4

(a) For explanation of terms and concepts, refer to *Australian Labour Market Statistics* (cat. no. 6105.0).

(b) Small movements are subject to high sample variability and should be used with caution.

Source: *Labour Force, Australia, Detailed — Electronic Delivery, Quarterly* (cat. no. 6291.0.55.001).

10

AVERAGE HOURS WORKED

	Average weekly total hours worked, all employed persons(a)		
	Males	Females	Persons
2002			
November	39.1	26.9	33.8
2003			
February	38.0	25.8	32.5
May	40.4	27.1	34.3
August	38.4	27.5	33.4
November	38.7	27.4	33.5
2004			
February	38.1	26.0	32.7

(a) For explanation of terms and concepts, refer to *Labour Force, Australia* (cat. no. 6202.0).

Source: *Labour Force, Australia, Detailed — Electronic Delivery, Quarterly* (cat. no. 6291.0.55.001).

11

JOB VACANCIES(a)(b)

	no.	rate(c)	Change from corresponding quarter of previous year
	'000	%	%
2002			
November	*2.1	*1.3	11.1
2003			
February	*2.1	*1.2	43.1
May	*2.0	*1.2	20.8
August	*1.9	*1.1	-14.3
November	1.6	np	-21.5
2004			
February	1.4	np	-33.7

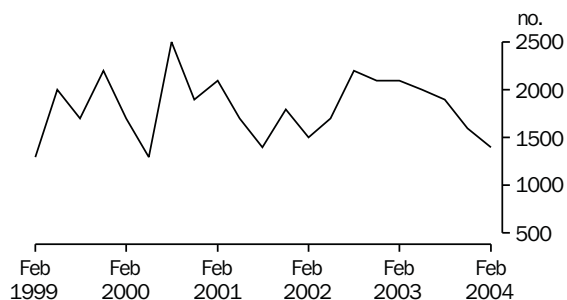
(a) For explanation of terms and concepts, refer to *Job Vacancies, Australia* (cat. no. 6354.0).

(b) Care should be exercised in using these series as some estimates are subject to high sampling variability.

(c) Job vacancies expressed as a percentage of the number of employees plus job vacancies. From November 2003, the rate is no longer published.

Source: *Job Vacancies, Australia* (cat. no. 6354.0).

JOB VACANCIES, TASMANIA



12

INDUSTRIAL DISPUTES(a)

	Working days lost	Twelve months ended	Working days lost per thousand employees
	'000		no.
2002			
December	1.2	December	20
2003			
January	—	January	20
February	—	February	20
March	—	March	10
April	—	April	10
May	—	May	10
June	—	June	9
July	—	July	9
August	—	August	8
September	—	September	8
October	0.5	October	10
November	0.1	November	10
December	0.1	December	4

(a) For explanation of terms and concepts, refer to *Industrial Disputes, Australia* (cat. no. 6321.0).

Source: *Industrial Disputes, Australia* (cat. no. 6321.0).

	Males			Females			Persons		
	Full-time adult ordinary time earnings	Full-time adult total earnings	All males total earnings	Full-time adult ordinary time earnings	Full-time adult total earnings	All females total earnings	Full-time adult ordinary time earnings	Full-time adult total earnings	All employees total earnings
ORIGINAL									
2002									
August	841.60	877.90	740.20	748.90	762.20	473.80	812.80	841.80	611.50
November	849.80	887.70	767.60	758.40	772.70	490.40	820.80	851.30	628.20
2003									
February	863.00	903.20	780.40	748.30	762.70	481.90	826.00	858.10	629.90
May	864.00	904.20	759.10	761.90	775.20	485.80	831.10	862.60	619.30
August	864.80	903.30	757.80	758.10	766.20	496.30	831.40	860.40	631.50
November	867.60	910.80	755.00	768.70	777.80	512.50	835.80	868.00	638.30
TREND(b)									
2002									
August	842.20	881.20	743.40	743.10	757.40	473.30	809.50	840.30	608.90
November	850.30	889.00	762.30	751.70	765.10	481.90	819.20	849.80	622.40
2003									
February	858.80	897.30	770.50	755.90	769.80	484.30	826.40	857.30	626.20
May	864.50	903.90	766.90	758.80	772.00	488.70	830.60	861.90	627.10
August	867.60	908.50	760.60	762.50	772.70	499.10	833.70	864.80	631.90
November	868.30	910.60	751.80	764.60	770.60	512.10	835.00	865.00	638.20

(a) For explanation of terms and concepts, refer to *Average Weekly Earnings, Australia* (cat. no. 6302.0).

(b) ABS trend estimates for the most recent months are revised, see Notes on page 2.

Source: *Average Weekly Earnings, Australia* (cat. no. 6302.0).

	Index numbers				Percentage change	
	Mar qtr 2003	Jun qtr 2003	Sep qtr 2003	Dec qtr 2003	Jun qtr 2003 to Sep qtr 2003	Sep qtr 2003 to Dec qtr 2003
SELECTED INDUSTRIES(c)						
Manufacturing	116.3	117.6	118.1	119.8	0.4	1.4
Retail trade	115.0	115.6	117.1	117.8	1.3	0.6
Government administration and defence	115.2	115.2	117.3	118.4	1.8	0.9
Education	120.0	123.0	124.1	124.2	0.9	0.1
Health and community services	115.2	115.5	118.3	118.8	2.4	0.4
All industries(d)	116.6	117.4	119.0	120.0	1.4	0.8
SELECTED OCCUPATIONS						
Professionals	118.3	120.3	122.0	122.6	1.4	0.5
Associate professionals	117.0	117.1	118.9	120.5	1.5	1.3
Tradespersons & related workers	115.0	116.0	116.9	118.8	0.8	1.6
Intermediate clerical, sales & service workers	116.4	116.6	118.3	119.2	1.5	0.8
Intermediate production & transport workers	117.4	118.8	119.8	120.5	0.8	0.6
Elementary clerical, sales & service workers	116.0	116.8	118.9	119.6	1.8	0.6
Labourers & related workers	114.9	116.0	117.8	na	1.6	na
All occupations	116.6	117.4	119.0	120.0	1.4	0.8

(a) Base of each index: September quarter 1997 = 100.0.

(b) These indexes are a measure of quarterly changes in wage and salary costs for employee jobs. They are one of four sets of indexes that together comprise the Wage Cost Index. For explanation of terms and concepts, refer to *Wage Cost Index, Australia* (cat. no. 6345.0).

(c) Industry is shown at the ANZSIC division level for selected divisions.

(d) Excludes Agriculture, forestry and fishing.

Source: ABS data available on request; Wage Cost Index.

15

SUMMARY OF ANNUAL MOVEMENTS IN WAGES AND PRICES(a), PERCENTAGE CHANGE FROM PREVIOUS YEAR — ORIGINAL

	<i>CPI all groups—Hobart</i>	<i>Price index of materials used in house building all groups—Hobart</i>	<i>Price index of materials used in building other than house building all groups—Hobart</i>	<i>Average weekly total earnings, full-time adult employees(b)</i>
	%	%	%	%
2000–01	5.8	1.8	0.3	3.2
2001–02	2.0	1.9	1.7	4.6
2002–03	3.3	4.1	2.4	5.5
2001				
December	2.1	1.6	1.2	–4.4
2002				
March	2.3	1.8	1.2	6.1
June	2.7	2.3	2.2	5.2
September	3.5	3.4	2.7	7.2
December	3.1	3.9	2.7	5.2
2003				
March	3.6	4.7	2.1	4.9
June	2.8	4.5	2.1	4.9
September	2.6	4.0	2.0	2.2
December	2.9	3.8	1.9	2.0

(a) See note 5 on page 2 of this issue on the impacts of The New Tax System (TNTS).

(b) March, June, September and December data relates to February, May, August and November survey dates as published in *Average Weekly Earnings, Australia* (cat. no. 6302.0).

Source: ABS data available on request; *Producer Price Index* (cat. no. 6427.0); *Consumer Price Index, Australia* (cat. no. 6401.0); *Average Weekly Earnings, Australia* (cat. no. 6302.0).

16

HOUSE PRICE INDEX NUMBERS(a)(b)

	<i>Established house price index</i>		<i>Project home price index</i>	
	<i>Index</i>	<i>% change(c)</i>	<i>Index</i>	<i>% change(c)</i>
2000–01	134.2	4.0	140.7	11.5
2001–02	140.1	4.4	145.1	3.1
2002–03	157.1	12.1	158.5	9.2
2001				
December	138.3	2.5	143.4	0.5
2002				
March	142.1	2.7	144.6	0.8
June	144.9	2.0	149.7	3.5
September	148.9	2.8	152.5	1.9
December	150.8	1.3	154.4	1.2
2003				
March	160.9	6.7	161.2	4.4
June	167.9	4.4	165.7	2.8
September	177.4	5.7	166.7	0.6
December	183.0	3.2	168.9	1.3

(a) Base of each Index: 1989–90 = 100.0.

(b) Used in calculating the mortgage interest charges component of the Consumer Price Index.

(c) Percentage change over previous period.

Source: *House Price Indexes: Eight Capital Cities* (cat. no. 6416.0).

	<i>Hobart</i>					
	<i>Food</i>	<i>Clothing and footwear</i>	<i>Housing</i>	<i>Household furnishings, supplies and services</i>	<i>Transportation</i>	<i>Alcohol and tobacco</i>
2000						
December	132.0	112.9	105.8	124.6	130.4	181.6
2001						
March	134.3	110.7	106.9	125.6	131.4	185.4
June	136.0	112.2	107.2	126.6	134.6	188.6
September	135.7	109.3	107.4	127.3	131.5	189.4
December	138.2	113.9	107.8	126.9	130.4	189.5
2002						
March	140.4	110.9	109.0	127.6	131.3	191.5
June	141.1	113.3	110.3	127.4	135.9	193.0
September	142.0	107.4	112.4	127.7	134.9	195.5
December	143.0	108.3	113.0	127.8	136.3	196.3
2003						
March	146.0	104.3	115.2	127.5	139.0	198.9
June	146.5	110.1	116.9	128.8	134.3	203.3
September	146.4	103.3	118.3	128.4	136.7	206.5
December	147.7	106.8	119.3	128.1	136.3	208.9

	<i>Hobart</i>				<i>Weighted average of eight capital cities</i>	
	<i>Health</i>	<i>Education</i>	<i>Index, all groups</i>	<i>% change over previous period, all groups</i>	<i>Index</i>	<i>% change over previous period</i>
2000						
December	177.4	206.5	131.2	-0.1	131.3	0.3
2001						
March	181.5	215.1	132.1	0.7	132.7	1.1
June	181.4	215.1	133.4	1.0	133.8	0.8
September	180.3	215.0	132.8	-0.4	134.2	0.3
December	180.5	215.0	133.9	0.8	135.4	0.9
2002						
March	185.8	221.9	135.2	1.0	136.6	0.9
June	193.6	221.9	137.0	1.3	137.6	0.7
September	193.4	222.7	137.5	0.4	138.5	0.7
December	192.9	222.7	138.0	0.4	139.5	0.7
2003						
March	200.7	233.2	140.0	1.4	141.3	1.3
June	209.1	233.4	140.8	0.6	141.3	—
September	207.8	233.6	141.1	0.2	142.1	0.6
December	207.4	233.6	142.0	0.6	142.8	0.5

(a) Base year: 1989–90 = 100.0.

(b) Further information on construction of CPI indexes is contained in the bulletin *Australian Consumer Price Index Concepts, Sources and Methods* (cat. no. 6461.0).

(c) As a result introduction of the 14th Series Australian CPI there have been changes to some groups and restructuring of some others. See Appendix A2 of the September quarter issue 2000 of *Consumer Price Index, Australia* (cat. no. 6401.0) for more information.

(d) See Note 5 on page 2 of this issue on the impacts of The New Tax System (TNTS) introduced on 1 July 2000.

Source: *Consumer Price Index, Australia* (cat. no. 6401.0).

Index numbers for selected major building materials

	<i>Structural timber</i>	<i>Clay bricks</i>	<i>Ready mixed concrete</i>	<i>Precast concrete products</i>	<i>Steel decking, cladding etc.</i>	<i>Structural steel</i>
2000-01	120.6	132.6	117.9	131.6	107.6	129.3
2001-02	123.0	137.0	122.7	131.6	104.4	130.2
2002-03	126.3	145.5	134.4	131.6	110.2	132.4
2001						
December	123.1	135.3	116.7	131.6	105.6	129.4
2002						
March	123.2	137.6	124.0	131.6	102.5	131.0
June	123.4	139.9	133.2	131.6	101.8	131.0
September	124.0	143.9	133.8	131.6	107.8	132.1
December	124.8	144.0	134.0	131.6	107.0	132.1
2003						
March	126.1	147.0	134.0	131.6	113.1	132.1
June	130.1	147.0	135.9	131.6	112.9	133.1
September	131.0	147.1	137.3	137.9	111.2	133.1
December	131.0	147.1	137.3	137.7	109.5	133.1

Index numbers for selected major building materials

	<i>Reinforcing steel bar, fabric and mesh</i>	<i>Aluminium windows</i>	<i>Fabricated steel products</i>	<i>Builders' hardware</i>	<i>Sand and aggregate</i>	<i>Paint and other coatings</i>	<i>Non-ferrous pipes and fittings</i>
2000-01	107.8	116.8	114.0	119.3	147.9	135.0	185.6
2001-02	107.9	120.3	114.9	123.4	148.7	137.6	180.9
2002-03	110.8	121.5	128.8	123.2	157.6	142.2	176.4
2001							
December	107.9	120.3	114.4	123.6	147.4	137.4	178.1
2002							
March	107.9	120.3	111.4	123.3	147.4	137.6	182.0
June	107.9	120.3	119.7	123.3	152.9	137.9	180.2
September	110.3	120.3	129.7	123.2	157.2	140.2	176.4
December	110.3	120.3	129.7	123.2	157.2	142.4	176.4
2003							
March	110.7	120.3	126.7	123.2	157.2	141.9	176.4
June	111.7	124.9	128.9	123.3	158.8	144.1	176.4
September	112.9	124.9	132.3	123.3	156.5	145.2	180.4
December	110.4	124.9	139.4	123.3	157.3	143.4	183.4

For footnotes see end of table.

...continued

	<i>All electrical materials</i>		<i>All mechanical services</i>		<i>All plumbing materials</i>	
	<i>Index</i>	<i>% change over previous period</i>	<i>Index</i>	<i>% change over previous period</i>	<i>Index</i>	<i>% change over previous period</i>
2000-01	117.3	-0.3	118.2	-1.7	132.7	4.5
2001-02	118.5	1.0	120.9	2.3	132.4	-0.2
2002-03	117.9	-0.5	122.5	1.3	135.1	2.0
2001						
December	118.7	0.4	120.1	0.3	130.4	-1.1
2002						
March	119.5	0.7	121.8	1.4	133.4	2.3
June	117.7	-1.5	122.0	0.2	133.8	0.3
September	117.5	-0.2	122.1	0.1	135.0	0.9
December	117.6	0.1	122.5	0.3	135.3	0.2
2003						
March	117.8	0.2	122.6	0.1	134.8	-0.4
June	118.6	0.7	122.6	—	135.2	0.3
September	119.6	0.8	123.3	0.6	136.8	1.2
December	120.3	0.6	123.3	—	137.8	0.7
	<i>All groups excluding electrical materials and mechanical services</i>		<i>All groups</i>			
	<i>Index</i>	<i>% change over previous period</i>	<i>Index</i>	<i>% change over previous period</i>		
2000-01	120.5	1.2	119.3	0.3		
2001-02	122.1	1.3	121.3	1.7		
2002-03	125.7	2.9	124.2	2.4		
2001						
December	121.2	—	120.5	0.2		
2002						
March	122.2	0.8	121.6	0.9		
June	123.8	1.3	122.8	1.0		
September	124.9	0.9	123.5	0.6		
December	125.1	0.2	123.7	0.2		
2003						
March	125.6	0.4	124.2	0.4		
June	127.2	1.3	125.4	1.0		
September	127.9	0.6	126.0	0.5		
December	128.0	0.1	126.1	0.1		

(a) Base year: 1989-90 = 100.0.

Source: ABS data available on request; Producer Price Index (cat. no. 6427.0).

	<i>Dairy products(a)</i>			<i>Staff hours worked</i>	
	<i>Whole milk(b)</i>	<i>Factory butter(c)</i>	<i>Factory cheese(d)</i>	<i>Textile manufacturing(e)</i>	<i>Vegetable preserving</i>
	<i>million litres</i>	<i>tonnes</i>	<i>tonnes</i>	<i>'000</i>	<i>'000</i>
2000-01	589.7	5 949	32 355	938	1 037
2001-02	671.4	7 368	35 155	975	1 062
2002-03	585.4	na	31 632	1 022	1 344
2003					
February	48.1	na	3 208	85	134
March	42.4	na	3 337	87	131
April	34.9	na	2 251	78	136
May	31.8	na	2 113	96	164
June	20.0	na	1 651	73	125
July	14.6	na	na	90	126
August	26.2	na	na	84	129
September	54.3	na	na	77	84
October	78.0	na	na	87	112
November	81.2	na	na	72	120
December	70.5	na	na	63	128
2004					
January	63.1	na	na	51	68
February	nya	na	na	74	111
		<i>Refined zinc</i>	<i>Metallurgical refining</i>	<i>Electricity</i>	
		<i>'000 tonnes</i>	<i>Index(f)</i>	<i>million kW.h</i>	
2000-01		233.1	138.4	10 150	
2001-02		251.7	140.8	10 210	
2002-03		253.4	144.1	10 460	
2003					
February		19.9	132.8	..	
March		22.2	148.0	(Mar qtr) 2 430	
April		22.0	145.8	..	
May		23.2	150.6	..	
June		22.4	149.4	(Jun qtr) 2 700	
July		20.3	146.0	..	
August		19.6	141.7	..	
September		22.0	144.5	(Sep qtr) 2 920	
October		22.5	149.5	..	
November		21.5	144.8	..	
December		22.2	149.4	(Dec qtr) 2 430	
2004					
January		19.8	146.3	..	
February		17.4	129.0	..	

(a) Source: Australian Dairy Corporation.

(b) Includes the whole milk equivalent of farm cream intake.

(c) Includes butter equivalent of butter oil. From July 2002 the Australian Dairy Corporation advised that Factory butter production data are confidential.

(d) From July 2003 the Australian Dairy Corporation advised that factory cheese production data are confidential.

(e) Includes spinning, weaving and carpet making. Reported by establishments which manufacture textiles only, or manufacture clothing and textiles in the one plant.

(f) Metallurgical refining index (Base year: 1979-80 = 00.0). Output from selected establishments covering the smelting and refining of ferro-alloys, zinc and aluminium. The weighting pattern is based on the establishments' value added as derived from the 1979-80 manufacturing census. For multi-product establishments, value added was apportioned to products on the basis of gross receipts from each product.

Source: ABS data available on request; Employees Hours Worked Survey; Monthly Production Survey; Manufacturing Survey.

20

LIVESTOCK SLAUGHTERING — ORIGINAL

	Cattle					
	Bulls, bullocks and steers	Cows and heifers	Calves	Sheep	Lambs	Pigs
	'000	'000	'000	'000	'000	'000
2000–01	90.2	94.2	49.7	364.7	416.1	57.6
2001–02	80.6	79.4	44.6	275.8	426.4	53.1
2002–03	79.9	112.9	41.2	388.3	374.0	47.7
2002						
February	9.2	5.3	0.1	24.8	37.3	3.7
2003						
February	7.8	10.8	0.2	47.9	31.7	3.5
March	7.0	11.5	0.5	55.5	28.1	3.6
April	6.1	12.7	1.0	41.4	23.8	3.5
May	7.6	13.5	1.1	47.5	34.0	4.3
June	5.0	10.7	0.8	27.5	30.7	3.8
July	4.0	10.9	1.4	30.4	39.5	4.0
August	4.8	7.7	16.8	19.1	38.6	3.9
September	4.3	7.0	15.5	21.8	27.3	3.7
October	7.4	7.5	7.1	26.9	33.6	3.8
November	9.3	7.5	1.3	37.5	29.9	3.4
December	8.7	8.7	0.3	36.4	32.0	4.5
2004						
January	10.7	9.2	0.2	40.1	39.6	3.7
February	10.0	9.1	0.4	36.4	30.7	3.4

Source: ABS data available on request; Livestock Slaughtered.

21

LIVESTOCK SLAUGHTERING — SEASONALLY ADJUSTED(a) AND TREND(b)

	Seasonally adjusted			Trend		
	Cattle and calves	Sheep and lambs	Pigs	Cattle and calves	Sheep and lambs	Pigs
	'000	'000	'000	'000	'000	'000
2002						
February	15.2	52.1	4.3	14.9	50.4	4.2
2003						
February	22.7	65.1	4.0	22.3	64.4	4.1
March	21.5	68.4	3.3	21.6	66.3	3.9
April	20.2	65.4	3.5	20.6	68.0	3.8
May	20.1	71.8	3.9	20.2	69.0	3.8
June	18.2	61.4	3.5	20.1	69.6	3.8
July	19.4	79.0	4.0	20.5	69.8	3.9
August	24.7	70.0	4.2	21.0	70.2	3.9
September	21.8	67.7	3.8	21.5	70.3	3.9
October	19.9	63.9	3.9	21.9	69.8	3.9
November	22.9	75.0	3.9	22.4	68.7	3.9
December	22.4	70.4	3.7	22.8	67.1	3.9
2004						
January	23.0	65.8	4.1	23.4	65.0	3.9
February	25.7	56.0	4.0	23.8	63.4	3.9

(a) Seasonally adjusted factors are reviewed annually to take account of each additional year's original data. The results of the review are used to compile revised seasonally adjusted and trend estimates; see Notes page 2.

(b) ABS trend estimates for the most recent months are revised; see Notes page 2.

Source: ABS data available on request; Livestock Slaughtered.

22

MEAT PRODUCTION(a)

	<i>Beef</i>	<i>Veal</i>	<i>Mutton</i>	<i>Lamb</i>	<i>Pig meat(b)</i>	<i>Total</i>
	<i>tonnes</i>	<i>tonnes</i>	<i>tonnes</i>	<i>tonnes</i>	<i>tonnes</i>	<i>tonnes</i>
2000–01	48 771	996	7 232	8 014	3 583	68 596
2001–02	43 923	899	5 416	8 466	3 159	61 863
2002–03	51 376	826	7 495	7 439	2 715	69 851
2002						
February	4 190	4	496	745	220	5 656
2003						
February	5 135	7	925	613	196	6 876
March	4 872	14	1 076	552	206	6 720
April	4 765	23	793	461	192	6 233
May	5 538	26	903	682	248	7 396
June	4 026	19	532	613	219	5 408
July	3 727	30	582	803	227	5 368
August	3 332	322	370	778	225	5 026
September	3 061	301	430	556	204	4 553
October	3 940	139	535	651	211	5 476
November	4 649	28	767	609	189	6 242
December	4 693	9	729	633	242	9 189
2004						
January	5 588	8	771	773	204	7 344
February	5 418	10	729	606	191	6 953

(a) Carcass weight.

(b) Includes pork used for production of bacon and ham.

Source: ABS data available on request; Livestock Slaughtered.

23

PRINCIPAL MINERAL CONCENTRATES PRODUCED

	<i>Copper</i>	<i>Iron (pellets)</i>	<i>Lead</i>	<i>Tin(a)</i>	<i>Zinc</i>
	<i>'000 tonnes</i>	<i>'000 tonnes</i>	<i>'000 tonnes</i>	<i>'000 tonnes</i>	<i>'000 tonnes</i>
2000–01	105.4	2 027.3	40.6	14.7	143.2
2001–02	115.0	2 151.6	35.6	12.4	138.7
2002–03	108.1	2 142.3	42.2	8.5	141.9
2001					
December	30.9	554.1	8.4	3.6	37.9
2002					
March	28.0	533.5	9.9	2.7	33.3
June	23.6	576.3	8.5	3.0	32.4
September	34.5	513.1	9.7	3.7	39.0
December	25.4	516.3	9.2	1.7	31.4
2003					
March	25.6	578.7	12.4	2.4	35.0
June	22.7	534.2	10.8	0.8	36.5
September	22.9	560.8	9.2	—	34.0
December	29.2	582.3	11.2	—	38.5

(a) Tasmania's major tin producer, Renison Bell Ltd, ceased production in May 2003. It is currently inoperative.

Source: Mineral Resources Tasmania, Department of Infrastructure, Energy and Resources.

	Tasmanian-grown logs delivered					Sawn, peeled and sliced timber produced(b)				
	<i>Eucalypts</i>	<i>Hardwoods, excluding eucalypts(c)</i>	<i>Plant- ation(d) softwoods</i>	<i>Native soft- woods(e)</i>	<i>Total</i>	<i>Eucalypts</i>	<i>Hardwoods, excluding eucalypts(c)</i>	<i>Plant- ation(d) softwoods</i>	<i>Native soft- woods(e)</i>	<i>Total</i>
	'000 m ³	'000 m ³	'000 m ³	'000 m ³	'000 m ³	'000 m ³	'000 m ³	'000 m ³	'000 m ³	'000 m ³
2000-01	468.5	24.8	369.9	2.6	865.8	157.9	6.3	174.1	0.2	338.6
2001-02	513.9	31.7	447.2	0.9	993.8	170.2	8.1	208.9	0.3	387.4
2002-03	525.0	25.9	509.8	2.5	1 063.2	163.3	6.7	228.0	0.5	398.5
2001										
December	115.0	8.9	94.3	0.1	218.4	37.8	2.2	48.4	0.1	88.3
2002										
March	116.2	10.3	121.6	0.3	248.5	41.6	2.7	53.6	0.1	97.9
June	152.8	6.9	115.4	0.3	275.4	48.7	1.4	56.0	0.1	106.2
September	143.4	5.4	122.3	0.2	271.3	44.7	1.4	58.8	0.1	105.0
December	142.6	5.3	143.6	1.0	292.5	41.3	1.8	55.9	0.1	99.1
2003										
March	113.8	8.1	124.8	0.5	247.1	36.5	1.6	56.5	0.1	94.6
June	125.2	7.1	119.2	0.8	252.3	40.9	1.9	56.9	0.2	99.8
September	157.2	4.9	133.2	0.2	295.4	46.4	1.7	64.4	—	112.5
December	153.7	5.3	125.0	0.3	284.4	43.7	0.8	60.1	—	104.6

(a) Separate data for logs delivered and sourced from Crown and Private land is available on request.

(b) Includes plywood, veneer and sliced timber production converted to an equivalent cubic measurement.

(c) Includes blackwood, myrtle, sassafras etc.

(d) Radiata pine.

(e) Includes Huon pine, Celery Top pine and King William pine.

Source: ABS data available on request, Forest Products Survey.

							Value(a)		
	Dwelling units				New dwelling units	Alterations and additions to residential buildings(e)	Non-residential buildings(b)		Total of all building
	New houses	New other residential buildings(c)	Other dwelling units created (conversions etc.)(d)	Total dwelling units			Private	Total	
	no.	no.	no.	no.	\$m	\$m	\$m	\$m	\$m
2000-01	1 108	80	10	1 198	127.5	43.1	95.2	152.5	323.0
2001-02	1 878	141	13	2 032	221.0	51.7	113.6	168.0	440.7
2002-03	1 964	164	17	2 145	261.9	62.8	148.1	201.2	526.0
2003									
February	146	4	2	152	18.3	5.1	9.5	17.0	40.4
March	177	7	1	185	23.2	5.7	15.5	17.4	46.3
April	146	23	4	173	22.5	3.9	9.7	20.5	46.8
May	186	62	3	251	26.8	6.4	15.4	16.0	49.2
June	167	21	1	189	26.9	6.3	15.3	27.6	60.8
July	223	60	1	284	55.3	6.7	8.5	16.3	78.3
August	231	8	8	247	32.6	7.3	10.1	13.0	52.9
September	224	12	15	251	32.6	9.0	6.6	6.6	48.2
October	218	12	8	238	31.5	7.9	13.1	18.1	57.5
November	244	81	—	325	37.3	7.7	18.3	19.4	64.3
December	200	29	—	229	32.7	6.7	15.9	16.0	55.4
2004									
January	176	22	—	198	28.1	4.9	9.8	12.9	45.9
February	185	11	5	201	27.1	6.4	13.3	14.3	47.8

(a) Value data from July 2000 reference month onward are recorded inclusive of GST.

(b) Comprises non-residential building (new plus alterations and additions) valued at \$50,000 and over.

(c) New individual dwelling units (e.g. flats, home units and villa units).

(d) From alterations and additions to residential building, conversions of non-residential building to residential building etc.

(e) Valued at \$10,000 and over. Includes conversions and dwelling units approved as part of alterations and additions or as part of the construction of non-residential building. See *Building Approvals, Australia* (cat. no. 8731.0) or page 2 of this publication for more details.

Source: *Building Approvals, Australia* (cat. no. 8731.0).

	<i>Total number of dwellings(a)</i>			<i>Total value of commitments(b)</i>		
	<i>Original</i>	<i>Seasonally adjusted(c)</i>	<i>Trend(c)</i>	<i>Original</i>	<i>Seasonally adjusted(c)</i>	<i>Trend(c)</i>
	<i>no.</i>	<i>no.</i>	<i>no.</i>	<i>\$m</i>	<i>\$m</i>	<i>\$m</i>
2003						
February	1 015	1 061	1 110	99	106	109
March	1 152	1 124	1 122	114	109	112
April	1 073	1 132	1 151	106	118	116
May	1 281	1 162	1 199	128	116	121
June	1 247	1 282	1 257	128	130	127
July	1 366	1 328	1 308	142	134	133
August	1 303	1 313	1 334	135	134	137
September	1 354	1 385	1 324	144	145	138
October	1 409	1 334	1 283	152	142	138
November	1 176	1 182	1 224	130	130	136
December	1 120	1 144	1 162	136	130	133
2004						
January	917	1 092	1 103	112	136	131
February	979	1 025	1 053	117	124	129

(a) Includes new dwellings, established dwellings and refinancing. Excludes alterations and additions.

(b) Commitment is a firm offer of housing finance. It either has been, or is normally expected to be, accepted. Includes commitments to provide housing finance to employees and commitments accepted and cancelled in the same month. Excludes alterations and additions. Includes refinancing.

(c) New seasonal factors based on the concurrent adjustment method have been incorporated, resulting in revisions to all seasonally adjusted and trend series.

Source: *Housing Finance for Owner Occupation, Australia* (cat. no. 5609.0).

	Asset			Industry			
	<i>Buildings and structures</i>	<i>Equipment, plant and machinery</i>	<i>Total asset</i>	<i>Mining</i>	<i>Manufacturing</i>	<i>Other selected industries</i>	<i>Total all industries</i>
	\$m	\$m	\$m	\$m	\$m	\$m	\$m
2000-01	134	467	600	87	162	352	600
2001-02	445	518	963	57	154	752	963
2002-03	255	628	883	45	240	599	883
2001							
December	103	107	210	11	42	157	210
2002							
March	136	120	256	17	36	203	256
June	138	169	307	14	35	258	307
September	88	101	189	9	33	147	189
December	55	213	268	13	69	186	268
2003							
March	73	151	224	14	89	121	224
June	39	164	203	9	49	145	203
September	17	143	160	5	33	122	160
December	20	139	159	9	30	120	159

(a) Estimates based on a sample survey and therefore subject to sampling variability. Covers selected industries only — mining, manufacturing, and other selected industries.

(b) Current prices.

(c) See *Private New Capital Expenditure and Expected Expenditure* (cat. no. 5625.0) or page 2 of this issue on the impacts of The New Tax System (TNTS) introduced on 1 July 2000.

Source: *Private New Capital Expenditure and Expected Expenditure* (cat. no. 5625.0).

	<i>Establish- ments(b)</i>	<i>Guest rooms(b)</i>	<i>Bed spaces(b)</i>	<i>Persons employed(b)</i>	<i>Room nights occupied(b)</i>	<i>Room occupancy rate</i>	<i>Guest nights(b)</i>	<i>Bed occupancy rate</i>	<i>Guest arrivals(b)</i>	<i>Takings from accommo- dation(b)(c)</i>
	<i>no.</i>	<i>no.</i>	<i>no.</i>	<i>no.</i>	<i>'000</i>	<i>%</i>	<i>'000</i>	<i>%</i>	<i>'000</i>	<i>\$'000</i>
LICENSED HOTELS WITH FACILITIES										
2002										
September qtr	54	2 863	7 864	2 448	101.1	38.5	152.9	21.2	84.2	9 103
2003										
July	na	na	na	na	33.9	37.3	50.9	20.1	27.8	3 216
August	na	na	na	na	37.5	41.3	56.0	22.1	30.5	3 767
September	na	na	na	na	43.5	49.5	69.9	28.5	39.4	4 395
September qtr	54	2 929	8 163	2 515	114.9	42.7	176.8	23.5	97.7	11 378
MOTELS AND GUEST HOUSES WITH FACILITIES										
2002										
September qtr	54	1 716	5 243	886	60.2	38.1	107.3	22.2	59.8	5 239
2003										
July	na	na	na	na	20.2	34.2	35.3	20.1	20.3	1 869
August	na	na	na	na	21.3	36.3	37.2	21.3	20.9	2 008
September	na	na	na	na	25.0	43.7	48.2	28.3	27.7	2 467
September qtr	57	1 909	5 683	1 013	66.6	38.0	120.7	23.2	69.0	6 344
SERVICED APARTMENTS										
2002										
September qtr	31	1 125	3 914	492	46.2	44.6	97.3	27.0	38.6	4 934
2003										
July	na	na	na	na	16.7	46.2	33.2	26.9	13.5	1 874
August	na	na	na	na	18.8	52.1	34.9	28.4	13.1	2 076
September	na	na	na	na	20.8	59.7	43.6	36.6	18.2	2 389
September qtr	32	1 163	3 972	547	56.3	52.6	111.7	30.6	44.9	6 339
TOTAL ESTABLISHMENTS										
2002										
September qtr	139	5 704	17 021	3 826	207.5	39.6	357.5	22.9	182.6	19 276
2003										
July	na	na	na	na	70.7	38.0	119.4	21.6	61.7	6 959
August	na	na	na	na	77.7	41.8	128.2	23.3	64.6	7 851
September	na	na	na	na	89.4	49.7	161.7	30.2	85.3	9 250
September qtr	143	6 001	17 818	4 075	237.8	43.1	409.2	25.0	211.6	24 061

(a) Comprising establishments with 15 or more rooms or units. For explanation of terms and concepts refer to *Tourist Accommodation, Australia* (cat. no. 8635.0).

(b) Break in time series between the March and June quarters 2003. See *Tourist Accommodation, Australia* (cat. no. 8635.0) for details.

(c) 'Takings from accommodation' after 1 July 2000 are recorded inclusive of GST. See *Tourist Accommodation, Australia* (cat. no. 8635.0) or page 2 of this publication for more details.

Source: *Tourist Accommodation, Australia* (cat. no. 8635.0).

	<i>Cradle Mountain(b) (Lake Dove)</i>	<i>Lake St Clair(b) (Cynthia Bay)</i>	<i>Mt Field(c)</i>	<i>Freycinet(c)</i>	<i>Narawntapu(d) (Bakers Beach)</i>	<i>Mole Creek Karst(e) (Marakooa Cave)</i>	<i>Maria Island(f) (Darlington)</i>
	<i>no.</i>	<i>no.</i>	<i>no.</i>	<i>no.</i>	<i>no.</i>	<i>no.</i>	<i>no.</i>
2000-01	168 700	111 800	138 700	163 600	34 300	26 788	12 820
2001-02	178 600	107 800	105 000	167 800	35 800	26 103	12 598
2002-03	209 000	134 500	116 400	193 700	38 900	28 648	13 337
2003							
March	24 900	18 500	13 800	23 400	4 200	2 632	1 576
April	26 600	16 400	13 300	20 500	3 900	2 837	1 344
May	11 400	6 700	7 700	10 500	1 800	1 652	886
June	8 900	3 700	4 600	7 500	1 700	1 428	489
July	10 200	3 800	4 600	7 600	1 300	929	280
August	8 700	2 800	4 900	7 100	1 600	809	187
September	13 900	6 700	6 900	10 100	2 100	2 077	527
October	17 200	10 500	9 200	15 100	2 500	2 062	774
November	19 500	13 200	12 200	19 800	4 000	2 439	1 174
December	26 000	15 400	14 900	23 000	6 000	4 858	1 585
2004							
January	34 600	23 000	20 200	26 000	7 000	4 572	2 192
February	26 800	18 100	17 500	26 100	4 200	2 656	1 617
March	26 800	19 200	15 300	22 600	4 400	2 993	1 970

(a) For all parks except Narawntapu, the unit of measurement has changed from person entry to person visit. A 'person visit' occurs when a person enters a National Park for purposes of heritage or nature appreciation, or recreation. Repeat entries are not included. Measurement occurs at the designated sites in brackets.

(b) Estimated through a combination of traffic and visitor centre counts.

(c) Estimated through traffic and visitor centre counts and survey findings.

(d) Measured as a person entry, which occurs whenever a visitor enters a site, from a combination of traffic and visitor centre counts.

(e) Number of people taken on a guided tour.

(f) The sum of ferry arrivals. (Ferry off run 28/7/03 until 29/8/03).

Source: *Tasmanian Parks and Wildlife Service, Department of Tourism, Parks, Heritage and the Arts.*

	<i>Overland(b)</i>	<i>South Coast(c)</i>	<i>Freycinet(d)</i>	<i>Port Davey(c)</i>	<i>Frenchmans Cap</i>
	<i>no.</i>	<i>no.</i>	<i>no.</i>	<i>no.</i>	<i>no.</i>
2000-01	7 273	915	3 002	208	753
2001-02	7 537	1 099	3 512	229	644
2002-03	8 154	970	3 143	167	826
2003					
March	1 182	118	276	15	91
April	1 173	91	279	16	115
May	135	12	34	4	33
June	59	4	73	1	14
July	71	2	60	–	11
August	28	–	25	–	4
September	141	6	68	–	5
October	212	11	66	1	24
November	p 699	78	252	13	31
December	p 1 264	p 262	767	p 53	127
2004					
January	rp 1 216	rp 282	786	rp 52	132
February	rp 1 292	p 176	r 742	p 21	124
March	p 1 001	nya	235	nya	nya

(a) Numbers include only walkers who registered and represented their intention.

(b) Sum of registrations at Cradle Mt and Lake St Clair.

(c) Sum of registrations to walk the length of the track in any direction, irrespective of starting point.

(d) All overnight walkers registered in the park.

Source: Tasmanian Parks and Wildlife Service, Department of Tourism, Parks, Heritage and the Arts.

	Passenger vehicles	Other vehicles	Total	Change from corresponding month of previous year
	no.	no.	no.	%
ORIGINAL				
2000-01	9 944	4 693	14 637	..
2001-02	9 467	5 295	14 762	..
2002-03	9 017	6 384	15 401	..
2003				
January	591	434	1 025	3.6
February	619	450	1 069	-1.9
March	723	495	1 218	11.4
April	631	546	1 177	6.7
May	743	711	1 454	8.3
June	821	728	1 549	19.7
July	802	605	1 407	19.8
August	1 059	530	1 589	21.2
September	1 129	510	1 639	32.3
October	1 295	713	2 008	66.9
November	1 170	547	1 717	22.8
December	1 180	680	1 860	17.4
2004				
January	697	496	1 193	16.4
TREND				
2000-01	9 890	4 693	14 581	..
2001-02	9 500	5 264	14 763	..
2002-03	9 337	6 377	15 712	..
2003				
January	758	518	1 276	-0.3
February	777	522	1 299	1.6
March	798	534	1 332	4.8
April	819	547	1 366	8.2
May	849	561	1 410	11.7
June	902	576	1 478	17.2
July	966	590	1 556	23.4
August	1 018	602	1 620	28.5
September	1 042	611	1 653	31.4
October	1 033	619	1 652	31.7
November	998	625	1 623	29.3
December	951	629	1 580	25.2
2004				
January	901	632	1 533	20.1

(a) These statistics are based on the VFACTS series produced by the Federal Chamber of Automotive Industries. VFACTS reports the numbers of new motor vehicle sales by dealers and direct sales by manufacturers throughout Australia.

Source: Sales of New Motor Vehicles (cat. no. 9314.0.55.001).

							Trend	
							Total(d)	
	Original	Food retailing	Clothing and soft good retailing	Household good retailing	Recreational good retailing	Hospitality and services	Change from corresponding period of previous year	
	\$m	\$m	\$m	\$m	\$m	\$m	\$m	%
2000-01	3222.4	1401.0	158.9	479.8	180.8	377.9	3230.0	6.0
2001-02	3384.3	1450.5	190.1	520.1	192.6	364.8	3387.0	4.9
2002-03	3582.2	1469.7	199.6	580.3	187.0	400.7	3595.6	6.2
2003								
February	270.6	122.2	16.7	47.9	15.1	32.7	299.3	4.9
March	296.8	122.7	16.7	48.8	15.0	33.2	301.2	4.7
April	298.6	123.5	16.7	50.1	15.3	34.2	304.5	5.1
May	307.4	124.8	16.7	51.5	15.9	35.4	309.2	6.1
June	287.7	126.5	16.8	53.0	16.8	36.7	314.7	7.7
July	309.9	128.4	16.7	54.4	17.8	37.8	320.2	9.4
August	307.0	130.5	16.7	55.5	18.6	38.4	325.2	10.9
September	309.8	132.4	16.7	56.1	19.1	38.7	329.2	11.9
October	337.0	133.9	16.8	56.3	19.1	38.6	331.9	12.5
November	344.3	134.9	16.9	56.3	18.9	38.4	333.5	12.6
December	433.6	135.6	17.0	56.2	18.7	38.1	334.5	12.5
2004								
January	341.6	135.9	17.2	56.1	18.4	37.9	335.2	12.4
February	311.4	136.2	17.4	56.1	18.2	37.7	335.7	12.2

(a) Excludes motor vehicles, parts, petrol, etc.

(b) ABS retail seasonally adjusted and trend estimates for earlier periods are revised each month. See *Retail Trade, Australia* (cat. no. 8501.0) for more details.

(c) Data from July 2000 reference month onwards are recorded inclusive of GST. See *Retail Trade, Australia* (cat. no. 8501.0) and page 2 of this publication for more details. A break in the trend series occurred between June and July 2000 because of the impact of The New Tax System (TNTS) on retail turnover.

(d) Includes Department stores and Other retailing.

Source: *Retail Trade, Australia* (cat. no. 8501.0).

	Tasmania				Australia			
	Imports	Imports change over preceding period	Exports	Exports change over preceding period	Imports	Imports change over preceding period	Exports(b)	Exports change over preceding period
	\$m	%	\$m	%	\$m	%	\$m	%
2000-01	524	19	2 435	10	118 317	7	119 539	23
2001-02	518	-1	2 388	-2	119 649	1	121 108	1
2002-03	763	47	2 453	3	133 129	11	115 479	-5
2003								
February	47	20	184	-7	10 226	-6	9 056	1
March	30	-35	221	21	10 786	5	9 868	9
April	52	71	205	-7	10 948	1	8 699	-12
May	32	-39	232	13	10 371	-5	8 972	3
June	35	9	162	-30	10 718	3	8 822	-2
July	52	49	182	12	10 604	-1	8 520	-3
August	47	-9	260	43	r 10 864	2	r 9 062	6
September	43	-7	168	-35	11 485	6	r 9 057	—
October	120	178	185	10	r 11 938	4	r 9 041	—
November	55	-54	183	-1	r 10 216	-14	r 8 657	-4
December	42	-23	155	-15	r 10 994	8	r 9 215	6
2004								
January	37	-12	r 170	r 10	r 9 939	r -10	r 7 901	-14
February	42	13	152	-10	9 452	-5	8 390	6

(a) It is difficult to get a complete picture of Tasmania's trade performance as imports recorded by the ABS include only goods imported directly into the state from overseas, and reported by the Australian Customs Service. Many of Tasmania's goods imported for direct consumption, or input into further processing industries, arrive via interstate ports, and are not included in this table.

(b) Includes re-exports.

Source: ABS data available on request, International Trade.

	<i>European Community</i>			<i>East Asia</i>					<i>Total all countries</i>
	<i>United States of America</i>	<i>United Kingdom</i>	<i>Total European Community</i>	<i>Japan</i>	<i>Korea</i>	<i>Taiwan</i>	<i>Hong Kong</i>	<i>ASEAN(a)</i>	
	\$'000	\$'000	\$'000	\$'000	\$'000	\$'000	\$'000	\$'000	
2000-01	229 841	37 169	154 043	573 314	183 972	214 042	252 793	390 642	2 435 416
2001-02	295 301	35 702	129 225	547 903	223 208	153 819	263 275	347 321	2 387 806
2002-03	230 809	39 119	215 837	588 373	247 487	149 217	326 211	303 612	2 453 415
2003									
February	17 035	1 749	15 230	43 546	26 884	9 995	21 792	17 837	183 614
March	17 017	11 159	26 642	46 931	17 118	10 050	36 933	27 312	221 326
April	21 282	2 102	16 556	50 082	19 832	14 815	22 998	34 999	204 879
May	12 961	2 770	68 150	49 557	16 736	10 509	13 829	23 879	231 732
June	9 449	1 196	6 522	48 338	10 015	8 553	30 289	15 366	162 155
July	30 546	1 887	4 197	47 024	21 087	9 471	19 021	17 178	182 327
August	91 496	1 650	5 063	44 650	15 996	12 299	32 222	26 846	260 083
September	9 177	5 441	14 030	39 379	16 386	13 309	r 21 860	17 290	r 168 388
October	14 212	1 124	7 375	r 46 160	18 676	12 987	23 769	r 19 339	r 184 947
November	7 340	2 620	4 670	53 539	22 099	r 9 076	25 579	22 696	r 182 766
December	8 607	1 083	r 7 393	r 45 091	4 318	r 12 158	r 22 180	r 22 237	r 154 796
2004									
January	r 11 621	1 118	r 5 620	r 44 763	r 23 543	r 13 859	r 17 784	r 15 971	r 169 642
February	18 728	1 169	10 609	43 866	4 587	5 153	24 094	7 849	152 247

(a) ASEAN member countries are: Brunei, Cambodia, Indonesia, Laos, Malaysia, Myanmar, Philippines, Singapore, Thailand and Viet Nam.

Source: ABS data available on request, *International Trade*.

	<i>Meat and meat preparations</i>	<i>Dairy product & eggs</i>	<i>Fish, crustaceans and molluscs</i>	<i>Vegetables and fruit</i>	<i>Wood and woodchips(a)</i>	<i>Textile fibres and wastes</i>	<i>Metallic ores and metal scrap</i>
	\$'000	\$'000	\$'000	\$'000	\$'000	\$'000	\$'000
2000-01	88 773	101 006	176 737	49 788	31 816	21 248	242 366
2001-02	75 541	114 682	174 885	60 759	43 788	23 797	188 273
2002-03	76 222	89 360	163 468	61 115	38 121	33 189	167 244
2003							
February	7 372	6 573	11 892	3 636	2 083	4 729	15 641
March	7 862	11 672	11 685	9 962	3 643	12 534	10 289
April	7 117	10 044	9 726	13 041	3 434	798	5 772
May	6 689	6 795	10 096	14 396	1 511	296	14 917
June	5 364	4 711	6 421	4 323	1 958	491	16 669
July	5 314	4 992	14 380	2 553	3 375	2 898	9 618
August	4 515	5 195	15 872	1 940	961	657	3 535
September	3 880	4 443	r 17 105	1 319	2 444	3 076	8 387
October	5 223	r 8 618	r 12 519	1 843	5 618	1 677	13 369
November	6 870	7 936	r 8 914	1 068	3 060	1 179	21 875
December	r 9 105	6 061	15 515	r 998	5 218	4 712	3 757
2004							
January	r 9 516	r 5 201	r 10 895	r 2 722	r 4 619	771	8 942
February	9 890	5 075	7 198	4 085	2 560	3 736	10 503

	<i>Paper and paperboard</i>	<i>Iron and steel</i>	<i>Non-ferrous metals</i>	<i>Road vehicles and transport equipment</i>	<i>Other and combined confidential items(b)</i>	<i>Total all commodity groups</i>
	\$'000	\$'000	\$'000	\$'000	\$'000	\$'000
2000-01	3 444	4 209	793 286	107 374	815 368	2 435 416
2001-02	14 208	2 894	762 015	106 156	820 806	2 387 806
2002-03	26 893	2 911	751 109	132 056	911 726	2 453 415
2003						
February	2 823	237	51 561	260	76 808	183 614
March	3 347	211	64 981	8 190	76 950	221 326
April	3 760	244	64 288	609	86 046	204 879
May	3 618	47	47 881	56 501	68 985	231 732
June	2 780	236	49 140	822	69 241	162 155
July	2 178	198	66 332	99	70 389	182 327
August	2 015	150	77 432	77 747	70 067	260 083
September	2 086	291	49 240	310	75 807	r 168 388
October	2 193	3 137	58 704	564	71 481	r 184 947
November	1 880	246	61 797	431	r 67 510	r 182 766
December	2 463	442	r 35 961	145	r 70 419	r 154 796
2004						
January	2 962	r 3 135	r 50 672	943	r 69 265	r 169 642
February	3 021	78	39 478	3	66 618	152 247

(a) Hardwood woodchips exports are confidential for Tasmania from June 2000.

(b) Includes medical and pharmaceutical products from January 2002.

Source: ABS data available on request, International Trade.

	NSW	Vic.	Qld	SA	WA	Tas.	Aust.(a)
Population							
Estimated resident population, September 2003 ('000) p	6 699.3	4 933.6	3 817.0	1 529.4	1 959.7	478.4	19 941.3
Proportion of Australian population, September 2003 (%) p	33.6	24.7	19.1	7.7	9.8	2.4	100.0
Population growth rate, 12 months to September 2003 (%) p	0.8	1.3	2.3	0.6	1.5	1.1	1.3
Labour force							
Employment growth, March 2003 to March 2004 (trend series) (%)							
Males	2.0	2.4	3.7	-0.6	1.4	4.7	2.4
Females	0.3	-0.4	1.7	-8.3	0.6	3.9	0.3
Persons	1.2	1.1	2.8	-3.2	1.1	4.3	1.5
Unemployment rate, March 2004 (trend series) (%)	5.3	5.6	6.3	6.5	5.5	6.8	5.7
Unemployment growth, March 2003 to March 2004 (trend series) (%)	-12.3	-0.9	-9.9	4.6	1.4	-21.7	-7.2
Participation rate, March 2004 (trend series) (%)	62.6	63.2	64.8	61.5	65.7	59.2	63.6
Job vacancies % change, February 2003 to February 2004	-4.4	6.6	-7.6	-21.9	-14.5	-33.7	-5.0
Working days lost through industrial disputes, 12 months to December 2003 (days per '000 employees)	52	72	33	19	97	4	53
Wages and prices							
Average weekly full-time adult employees' total earnings (trend series) November 2003(\$)							
Males	1 100.60	1 072.90	996.00	953.30	1 076.80	910.60	1 058.80
Females	895.90	852.70	804.30	823.50	798.30	770.60	854.60
Persons	1 025.70	998.40	927.60	908.80	982.30	865.00	986.50
Average weekly full-time adult employees' total earnings, growth (trend), 12 months to November 2003 (%)	4.9	7.0	7.7	5.6	6.3	1.8	6.1
Consumer price index, all groups, annual growth to December qtr 2003 (%) (b)	2.3	2.2	3.1	3.3	2.1	2.9	2.4
Building							
% change in the number of total dwelling units approved (original),							
— in the 12 months ended February 2004, over the same period previous year	-9.6	-2.4	5.2	1.8	11.3	39.2	-0.6
— February 2003 to February 2004	7.5	-2.7	7.1	10.7	10.8	32.2	5.4

For footnotes see end of table.

...continued

	NSW	Vic.	Qld	SA	WA	Tas.	Aust.(a)
Private investment and retail trade							
% change in private new capital expenditure, 12 months ended December 2003 over the same period previous year (original)	2.1	-0.1	5.6	13.8	35.4	-26.9	6.8
% change in trend estimates turnover of retail establishments, February 2004 (change from corresponding month of the previous year)	6.0	9.3	13.5	5.4	7.1	12.2	8.4
Transport							
% change in number of sales of new motor vehicles in the 12 months ended January 2004 over the same period previous year, (trend)	7.0	8.4	14.6	16.1	12.7	19.4	10.1
Agriculture							
% change in the number of livestock slaughtered 12 months ended February 2004 over the same period previous year (original)							
Cattle and calves	-22.6	-1.1	3.1	-19.2	3.4	3.4	-5.7
Sheep and lambs	-21.8	-5.9	-9.6	-23.4	5.6	-15.6	-12.3
Tourism — room occupancy rates							
Hotels, motels and guest houses, and serviced apartments with facilities, September qtr 2003 (%)	62.5	56.7	69.3	55.3	59.7	43.1	62.5
Australian National and State Accounts							
% change in Domestic (State) Final Demand(c), Chain Volume measures (trend series)							
September qtr 2003 to December qtr 2003	1.2	0.9	3.1	0.6	1.8	2.1	1.7
December qtr 2002 to December qtr 2003	4.8	3.3	8.5	5.3	9.2	7.0	5.9

(a) Australian totals include the ACT and NT, with the exception of Agriculture, which excludes both.

(b) CPI applies to state capitals.

(c) Total of four types of expenditure: Private investment, Private consumption, Government investment, Government consumption.

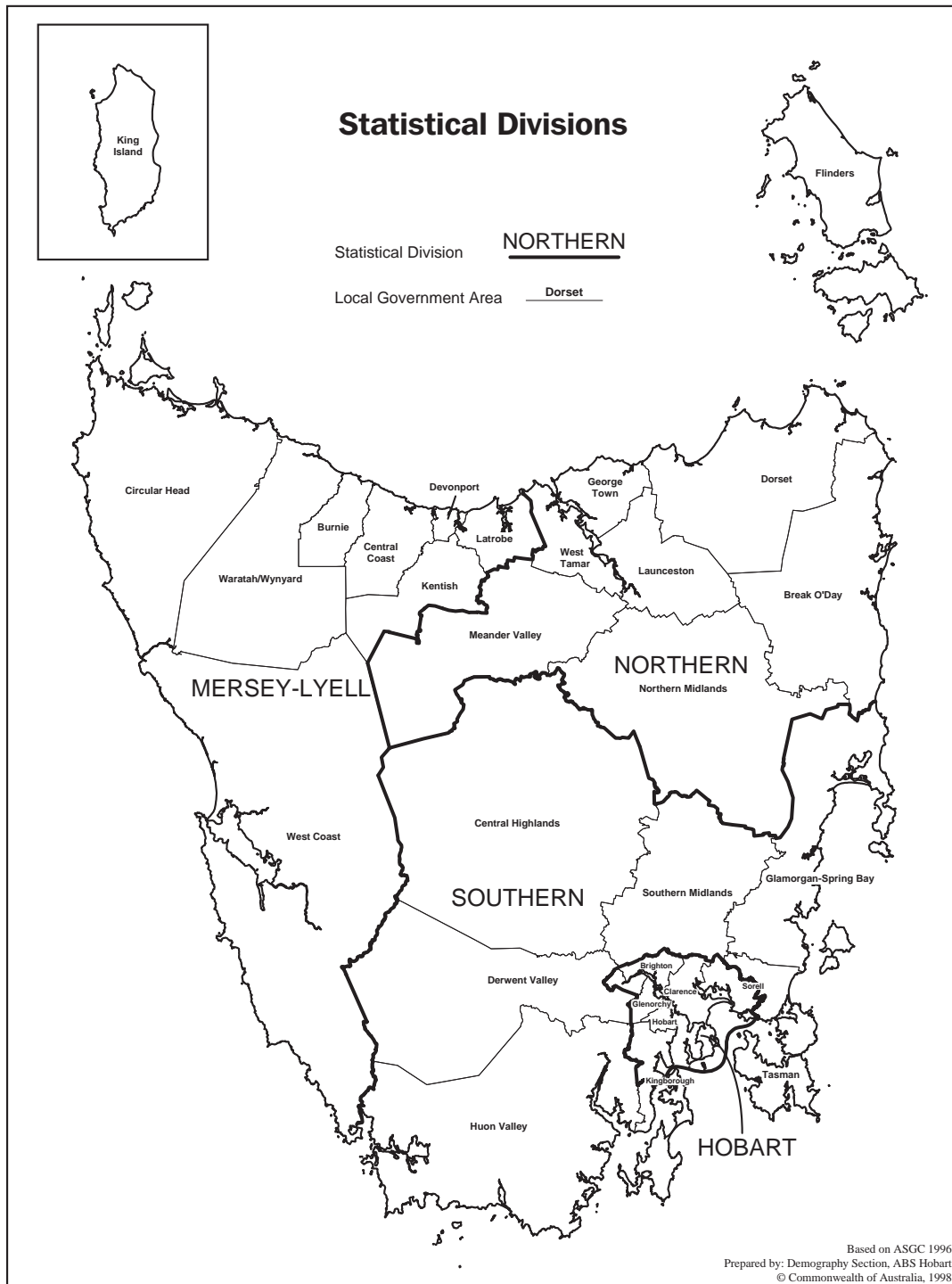
		<i>Greater Hobart and Southern Statistical Divisions</i>	<i>Northern Statistical Division</i>	<i>Mersey-Lyell Statistical Division</i>	<i>Tasmania</i>
Area(a)	<i>Unit</i>	25 616	19 980	22 523	68 121
Population					
Estimated resident population, 30 June 2001	no.	231 854	133 115	106 826	471 795
Estimated resident population, 30 June 2002	no.	232 713	133 595	106 417	472 725
Births 2001(b)	no.	3 199	1 815	1 397	6 430
Deaths 2001(b)	no.	1 827	1 148	884	3 876
Labour force (original), March 2004					
Total employed	no.	104 800	60 700	48 200	213.7
Total unemployed	no.	7 800	5 400	2.7	16 000
Unemployment rate	%	6.9	8.2	5.4	6.9
Participation rate	%	59.2	61.1	59.5	59.8
Schools, 2002(c)					
Government	no.	98	58	58	214
Non-government	no.	33	17	16	66
Full-time students, 2002(c)					
Government	no.	28 454	18 091	14 963	61 508
Non-government	no.	11 981	4 946	3 915	20 842
All schools	no.	40 435	23 037	18 878	82 350
Educational qualification, 2001 Census(d)					
Postgraduate degree level	no.	3 016	940	386	4 342
Graduate diploma and Graduate certificate level	no.	2 374	850	525	3 749
Bachelor degree level	no.	16 171	7 052	3 821	27 044
Advanced diploma and diploma level	no.	9 613	4 785	3 429	17 827
Certificate level	no.	25 715	15 463	12 953	54 131
Agriculture					
Establishments with agricultural activity, 2001–02 season	no.	1 060	1 471	1 495	4 027
Total area of establishments	ha.	704 091	774 431	296 618	1 775 140
Crops, production, 2001–02 season					
Potatoes	tonnes	7 715	128 560	213 076	350 134
Onions	tonnes	—	18 022	44 942	62 975
Apples	tonnes	36 741	6 234	8 642	51 617
Barley	tonnes	8 765	16 065	1 608	26 438
Livestock, 2001–02 season					
Meat cattle	no.	60 255	169 631	201 886	431 771
Milk cattle	no.	4 389	79 489	103 182	187 060
Sheep and lambs	no.	1 452 094	1 753 403	174 135	3 379 632
Pigs	no.	1 331	13 277	3 177	17 785
Gross value of agricultural production, 2001–02	\$m	170	352	382	903
Building, 2002–03					
Total dwelling units approved	no.	1 216	591	338	2 145
Value of total residential building approved	\$'000	187 915	85 014	51 817	324 746
Value of total building approved	\$'000	289 273	138 639	98 042	525 954
Dwellings, Census 2001					
Total dwellings	no.	102 374	59 307	46 364	208 046
Occupied private dwellings	no.	89 156	51 249	40 766	181 172
Fully owned	no.	35 777	21 570	17 984	75 331

(a) Source: Department of Primary Industries, Water and Environment.

(b) Births and deaths are based on usual residence year of registration. Total Tasmania includes usual residence other than Tasmanian Statistical Divisions.

(c) Source: Tasmanian Department of Education and the Department of Education, Science and Training.

(d) From 2001 the *Australian Standard Classification of Education (ASCED)* (cat. no. 1272.0) replaced the *ABS Classification of Qualifications (ABSCQ)* (cat. no. 1262.0). For further information see ASCED.



FOR MORE INFORMATION...

- INTERNET** www.abs.gov.au the ABS web site is the best place to start for access to summary data from our latest publications, information about the ABS, advice about upcoming releases, our catalogue, and Australia Now—a statistical profile.
- LIBRARY** A range of ABS publications is available from public and tertiary libraries Australia-wide. Contact your nearest library to determine whether it has the ABS statistics you require, or visit our web site for a list of libraries.
- CPI INFOLINE** For current and historical Consumer Price Index data, call 1902 981 074 (call cost 77c per minute).
- DIAL-A-STATISTIC** For the latest figures for National Accounts, Balance of Payments, Labour Force, Average Weekly Earnings, Estimated Resident Population and the Consumer Price Index call 1900 986 400 (call cost 77c per minute).

INFORMATION SERVICE

Data which have been published and can be provided within five minutes are free of charge. Our information consultants can also help you to access the full range of ABS information—ABS user-pays services can be tailored to your needs, time frame and budget. Publications may be purchased. Specialists are on hand to help you with analytical or methodological advice.

- PHONE** **1300 135 070**
- EMAIL** **client.services@abs.gov.au**
- FAX** 1300 135 211
- POST** Client Services, ABS, GPO Box 796, Sydney 2001

WHY NOT SUBSCRIBE?

ABS subscription services provide regular, convenient and prompt deliveries of ABS publications and products as they are released. Email delivery of monthly and quarterly publications is available.

- PHONE** 1300 366 323
- EMAIL** subscriptions@abs.gov.au
- FAX** 03 9615 7848
- POST** Subscription Services, ABS, GPO Box 2796Y, Melbourne 3001



2130360005044
ISSN 1034-1803

RRP \$23.00